

## Active IP Network Performance Analysis

### AppNeta's Awards



### Simple, Affordable Remote Performance Management Solution

Your business runs on networked applications that connect remote users to distributed resources. VoIP, virtualization, cloud computing and other performance-critical applications require you to keep your end-to-end network running all day, every day, at high levels of performance. Any drop in bandwidth or increase in latency can lead to service failure. While you are responsible for delivering end-to-end performance, you lack visibility into the network connecting distributed resources to remote offices—including WANs, service provider cloud networks and remote LANs.

How do you manage and monitor network and application performance without having full network visibility?

The PathView Cloud RPM solution solves this visibility problem by providing network insight in both directions through your own and third-party networks – from datacenters to remote sites and everything in between. By accurately measuring performance without impacting the environment, PathView Cloud's patented technology proactively troubleshoots network performance problems, continuously monitors in real-time against service level agreements and assesses network readiness for rolling out new applications and services.

### PathView microAppliance



PathView microAppliance

- **Find Network Issues Before They Impact Users**

Whether you are deploying a new service and want to understand if your end-to-end network is up to the task or you just want to ensure your network isn't slowing your users down, you can count on PathView. It continuously monitors your network for key performance metrics such as bandwidth, latency and jitter and lets you know when there are problems. Diagnostic information helps to easily fix tough network issues other tools just cannot see.

- **Reduce Operational Costs with a Cloud-Based Hosted Service**

PathView is a cloud-based hosted service enabled by a cell-phone size microAppliance. The PathView appliances deploy to any IP-addressable endpoint in minutes and require zero administration, reducing operational costs. PathView is ideal for organizations of all sizes from small-medium sized businesses up to the largest enterprise organizations.

- Proactively troubleshoot network and application performance issues with end-to-end analysis from the source to remote sites
- Deploy in minutes with cloud-based architecture and zero administration PathView Appliances
- Monitor network performance, Quality of Experience and Service Level Agreements
- Track your carrier's performance with measurements such as bandwidth, jitter, latency and packet loss

[www.AppNeta.com](http://www.AppNeta.com)

AppNeta Sales

(800)-508-5233

# Remote Performance Management Service:

# Features:

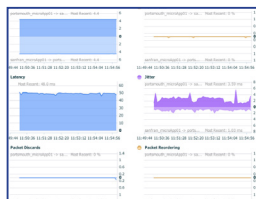
## Base Service PathView™



- Real-time Remote Performance Management (RPM) through a simple, cloud-based hosted service
- Active bandwidth monitoring and End to End QoS verification
- True end to end performance to any IP address over LANs, WANs, VPNs or the Internet
- Advanced diagnostics identify dozens of network faults and configuration issues

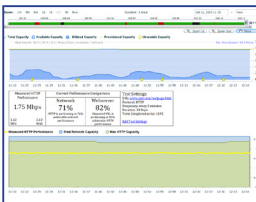
## Add-on Modules (Via zero-administration PathView Appliance)

### AppViewVoice™



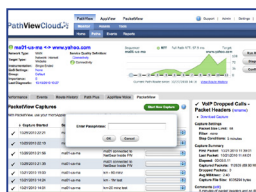
- Active application performance monitoring
- Pre-assess networks using live VoIP traffic without investing in or deploying any VoIP hardware
- Stress-test networks over days or weeks to identify issues caused by periodic or infrequent activities
- Generate traffic matching the exact port, protocol and behavior of major VoIP codecs

### AppViewWeb™



- Active application performance monitoring
- Continuously monitor the performance and uptime of any web site from the perspective that matters most, your offices and customers
- Analyze HTTP/S and DNS to determine the cause of poor performance, identifying exactly how fast a network can deliver web traffic and compare against live web traffic
- Works against internal and external web servers, including third party web sites with no modification

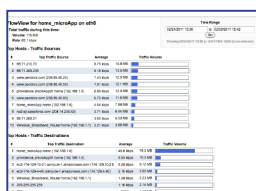
### PacketView™



- Simple, secure and affordable remote packet capture for use with WireShark™ or other analysis tools
- Trigger packet captures remotely, create recurring scheduled captures or automatically capture packets on SLA violation\*
- Complete end to end security with 256 bit AES encryption and SSL-tunnel upload and download
- WireShark™ compatible filter syntax and compressed file format; no need to learn new tools or syntax

\* Coming Soon

### FlowView™



- Automated remote site traffic & flow analysis
- Easy, cost effective method of generating and analyzing flow information from any remote location
- Full visibility independent of existing network hardware at remote site
- Seamless integration with complete PathView Cloud capabilities including active network analysis, application performance monitoring and packet capture