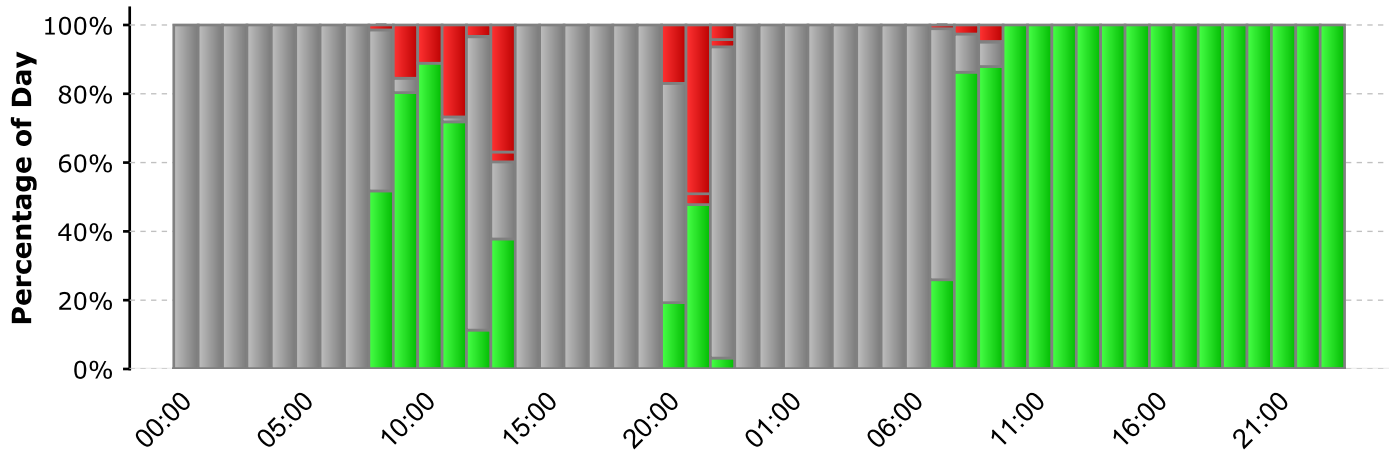


Service Quality Summary Report

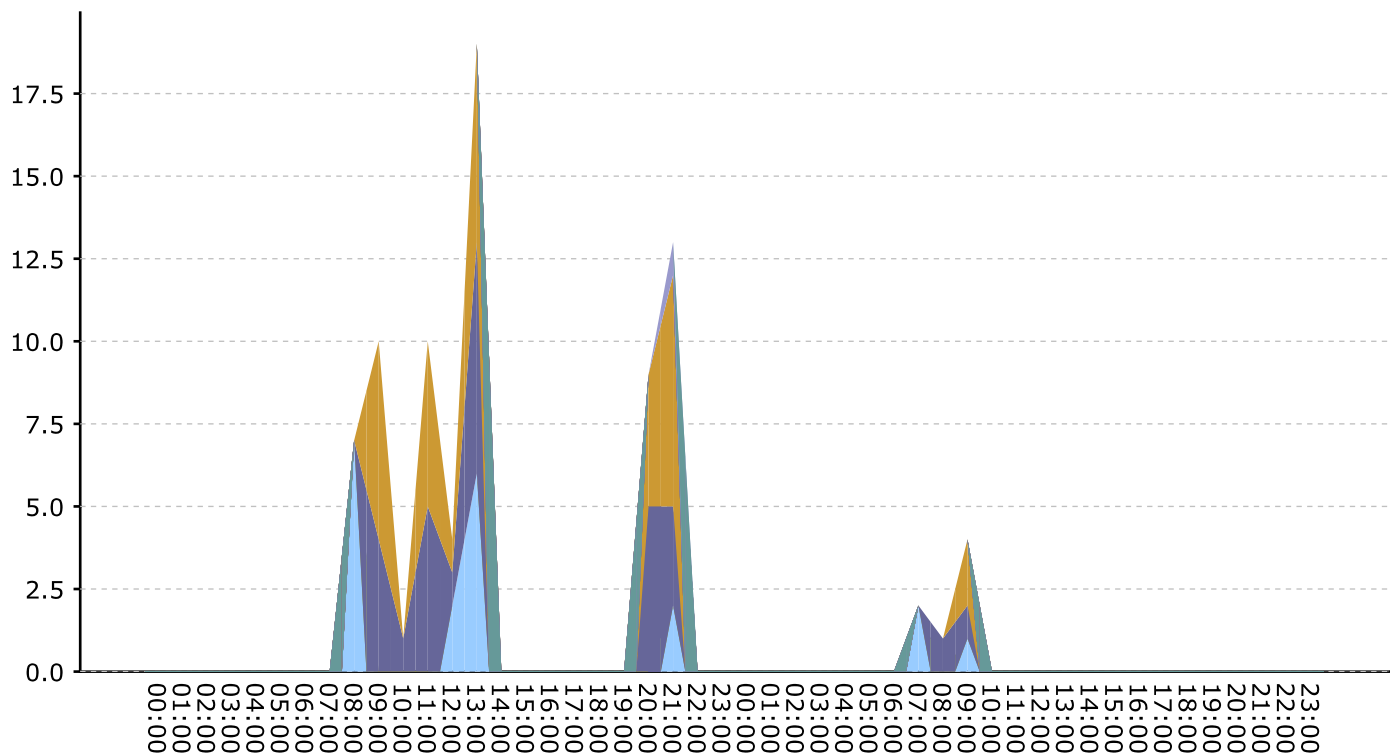


Groups:	All	Target Types:	All
Service Quality Definitions:	All	Importance:	All
Current Service Quality:	Ok	Path Names:	All
Path Count:	54	Time Range:	05/19/2010 - 05/20/2010

Service Quality Compliance



Violation Breakdown



Service Quality Summary Report



Groups:	All	Target Types:	All
Service Quality Definitions:	All	Importance:	All
Current Service Quality:	Ok	Path Names:	All
Path Count:	0	Time Range:	05/19/2010 - 05/20/2010

Type	# of Violations	% of All Violations	# of Violated Paths	Top Violating Path
Data Loss	31	38.8%	6	JLT45 <-> www.google.com
Data Jitter	28	35.0%	6	JLT45 <-> www.google.com
Connectivity	20	25.0%	9	JLT45 <-> bos_shortel_sw.jaalam.net
Available Capacity	1	1.2%	1	JLT45 <-> www.google.com
Totals	80	100%	22	

Top Offenders

Top Offenders by Count

Path Name	Target	Importance	Group	Type	Violations	Contribution to Total (%)
JLT45 <-> www.google.com	www.google.com	5	AWS Cloud	Server: WAN Webserver	13	22.0%
JLT45 <-> bos_shortel_sw.jaalam.net	172.16.133.251	5	Boston Office	Network: Switch	10	17.0%
JLT45 <-> fwbos.apparentnetworks.n	172.16.133.1	5	Boston Office	Network: Firewall	9	15.0%
SArmstrong_uApp_01 <-> pvc- st3.pathviewcloud.com	pvc- st3.pathviewcloud.com	5	AWS Cloud	Server: WAN Webserver	8	13.0%
SArmstrong_uApp_01 <-> pvc- st1.pathviewcloud.com	pvc- st1.pathviewcloud.com	5	AWS Cloud	Server: WAN Webserver	7	12.0%

Top Offenders by Duration

Path Name	Target	Importance	Group	Type	Dur. (hrs)	Contribution to Total (%)
JLT45 <-> www.google.com	www.google.com	5	AWS Cloud	Server: WAN Webserver	5	26.9%
SArmstrong_uApp_01 <-> pvc- st1.pathviewcloud.com	pvc- st1.pathviewcloud.com	5	AWS Cloud	Server: WAN Webserver	4	22.6%
SArmstrong_uApp_01 <-> pvc- st3.pathviewcloud.com	pvc- st3.pathviewcloud.com	5	AWS Cloud	Server: WAN Webserver	3	18.2%
SalesForce.com	na1.salesforce.com	5	Internet	Server: WAN Webserver	3	16.8%
JLT45 <-> bos_shortel_sw.jaalam.net	172.16.133.251	5	Boston Office	Network: Switch	1	8.1%